

em3D


EUROPEAN EXCLUSIVE IMPORTER

 **SoliFuse**

**Bring your ideas  
to life**

// Channel Letter  
3D Printing Solution

# Stand out with the first 3D printer created by a sign maker

 SoliFuse



## STYLE IN VOLUME

Make a difference easily. Add a “wow” effect and greater impact to your communications with three-dimensional forms.



## FINE DETAILS

- Sharp edges
- No post-print finishing required
- Up to 2 filaments simultaneously



## MATERIALS OF YOUR CHOICE

- PLA, PES
- UV & weather resistant
- Vibrant colors & outdoor durability
- Lighttight or translucent filament colors



## INTUITIVE SOFTWARE INCLUDED

- Create your 3D shape instantly
- Easy to use
- Generate 3D models based on 2D vector patterns
- Simple file loading and quick settings



## ENDLESS APPLICATIONS

- Illuminated signs and channel letters
- High-value, custom POS displays
- Indoor & outdoor signage
- Decoration and creative design



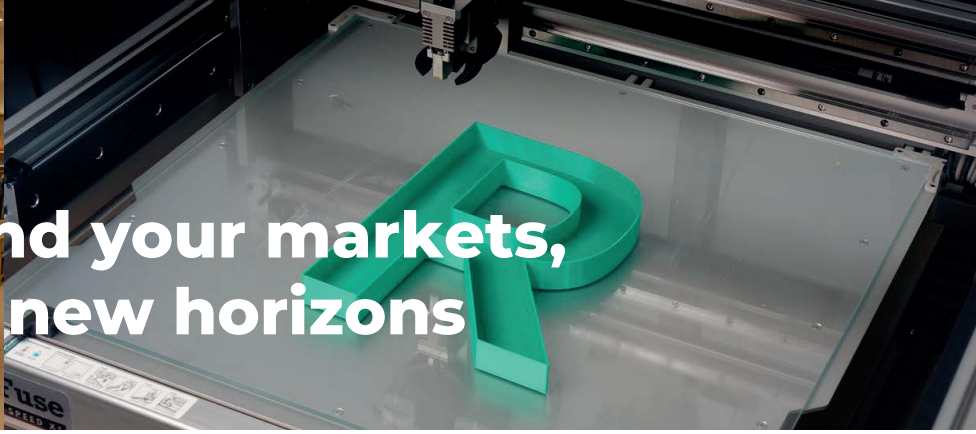
## MAXIMUM SPEED

- High-volume production without compromising quality
- Continuous 24/7 printing

**Boost your productivity,  
reduce your costs**

Smile

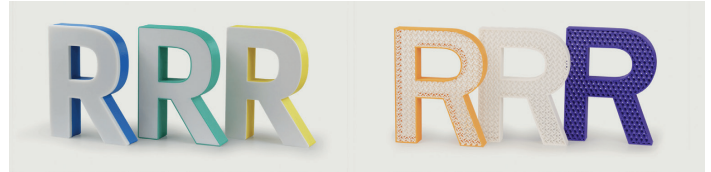
Expand your markets,  
open new horizons



## Illuminated signs & channel letters

### Easily create luminous 3D letters, ready to shine

With 3D printing, you can easily design illuminated channel letters combining lighttight and translucent filaments. Precisely define the light diffusion zones for a professional, modern and impactful result.



### One-Piece 3D Printing: Structure, Face, and Back

Don't limit yourself to just printing the box! Thanks to 3D technology, you can create the structure, face or back of your illuminated letters all in one piece. Multiply the styles and combinations for unique, robust and ready-to-assemble creations.

## Decoration & creative design

### Reinvent your interior with 3D decoration

3D printing opens up a world of possibilities for interior design. Wall sculptures, design elements, lighting fixtures or custom-made pieces: create unique, durable and personalized objects suited to your style and space.



## Filaments

PES is a PETG-based alloy designed for 3D printing channel letters, suitable for all weather conditions. Heat deformation temperature: 75°C. Outdoor lifespan: more than five years.

Strong and low-warping.

We offer two types of filaments for 3D printing raised letters:

### Lighttight Series



White



Black

### Translucent Series



White



Red



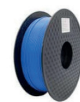
Yellow



Green



Orange



Blue



Pink



Purple

# FormLetter

Software designed to create your 3D shapes simply, quickly and efficiently!

FormLetter is the essential tool for visual communication professionals. You can create your file directly in the software or import the vector file and generate the 3D printing file. No 3D modeling skills needed.



## Simple, fast and intuitive interface



- Smooth navigation, immediate usability
- Ultra-intuitive interface: step-by-step guidance for creating your 3D shapes
- No complex learning required

## Visualize, validate, print



- Real-time preview: instantly view the final result and production costs before printing
- Automatic optimization: your project is ready for fast and error-free printing
- Easy export, full compatibility

## Powerful tools for unlimited customization

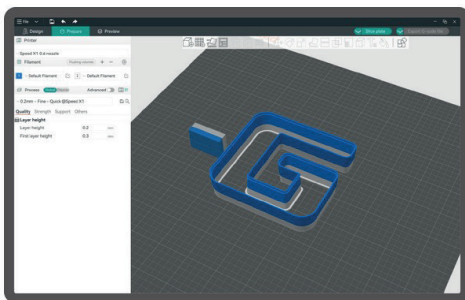


- Built-in library: access a wide range of ready-to-use shapes, fonts and effects
- Create custom designs without limits or constraints

## Designed to integrate perfectly with your tools



- One click is all it takes to export your file, ready for printing or cutting.



FormLetter **simplifies** the creation process, **increases** your **productivity**, and allows you to offer unique and **high value** 3D shapes.



## Technical specifications

### GENERAL

Build Volume	1350 × 900 × 120 mm
Technology	FFF (Fused Filament Fabrication)
Feeding Method	Two filaments in, one nozzle out
Print Head	HES Technology (High extruding speed print head)
Nozzle Temperature	260°C / 500°F
Build Platform Temperature	80°C / 176°F
Layer Height	0,2 - 0,3 mm
Print Speed	160 mm/s
Leveling Method	Auto calibration
Build Platform	Removable glass platform

### HARDWARE

Data Transmission	SD card
Motion Controller	STM32
Motion system	57mm step motors motion system
Screen	12864 mono LCD screen
Filament Sensor	Yes (Automatically pause printing when the filament run out)
Power Supply	Nema 6-15 power cord, 200~240V AC, 50/60 Hz, 2400 W

### FILAMENT

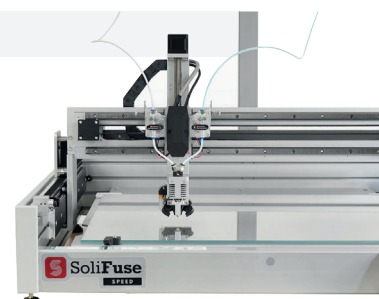
Filament Diameter	1,75 mm
Filament Type	PES filament (PETG-based material)
Third-party Filament	Available

### SOFTWARE FormLetter

Input Format	SVG, GCODE, DXF
Output Format	GCODE, DXF
Operating System	Windows 10

### PACKAGING

What's in the box	Speed X3 3D Printer ×1 Spool Holder Kit ×1 Removable Build Plate ×1 Starter Kit ×1
Printer Size <small>(without spool holder)</small>	1250 (L) × 1850 (P) × 850 (H) mm
Printer Weight	182 kg
Package Size	1400 (L) × 1890 (P) × 690 (H) mm
Package Weight	220 kg





em3D

240 rue Maurice Herzog  
Savoie Hexapôle  
73420 Viviers-du-Lac  
FRANCE

**+33 4 79 522 522**

Find our more about Solifuse Speed X3 solutions on :  
**[www.em3d.fr](http://www.em3d.fr)**